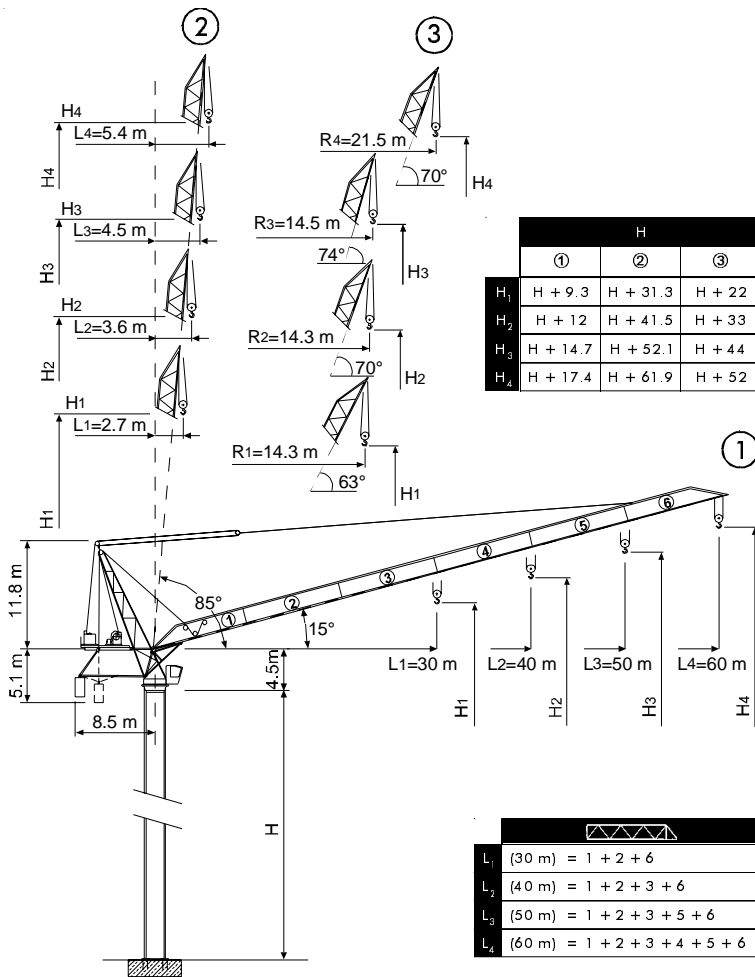


• **Gru a torre a braccio impennabile**  
**Luffing Jib Tower Crane** • **Grue à tour à flèche relevable**  
 • **Turmdrehkran mit Steilstellung-Ausleger**  
 • **Grua torre de pluma abatible**



 **FEM 1.001 A3**

- |          |  |           |
|----------|--|-----------|
| <b>H</b> | Altezza torre                            | <b>I</b>  |
| <b>R</b> | Raggio min. braccio in fuori servizio    |           |
| ①        | Sbraccio massimo                         |           |
| ②        | Sbraccio minimo in servizio              |           |
| ③        | Sbraccio minimo in fuori servizio        |           |
| <hr/>    |  |           |
| <b>H</b> | Tower height                             | <b>GB</b> |
| <b>R</b> | Min. jib parking radius (out-of-service) |           |
| ①        | Maximum jib                              |           |
| ②        | Minimum jib (in service)                 |           |
| ③        | Minimum jib (out of service)             |           |
| <hr/>    |  |           |
| <b>H</b> | Hauteur mât                              | <b>F</b>  |
| <b>R</b> | Rayon flèche min. hors service           |           |
| ①        | Portée maxi.                             |           |
| ②        | Portée min. en service                   |           |
| ③        | Portée min. hors service                 |           |
| <hr/>    |  |           |
| <b>H</b> | Turmhöhe                                 | <b>D</b>  |
| <b>R</b> | Mindst. Auslegerradius außer Betrieb     |           |
| ①        | Max. Ausleger                            |           |
| ②        | Mindst. Ausleger in Betrieb              |           |
| ③        | Mindst. Ausleger außer Betrieb           |           |
| <hr/>    |  |           |
| <b>H</b> | Altura torre                             | <b>E</b>  |
| <b>R</b> | Radio pluma minimo fuera de servicio     |           |
| ①        | Pluma maxima                             |           |
| ②        | Pluma minima en servicio                 |           |
| ③        | Pluma minima fuera de servicio           |           |

THE **ULTIMATE CRANE**™



# CTL 400/A-24

Diagramma di portata  
Load Diagram

I  
GB

Courbes de charges  
Lastkurven

F  
D

Curvas de cargas

E

		CTL 400/A-24															
		20	22	24	26	28	30	32	34	36	38	40	45	50	55	60	
12 t	- 25.7 m	12	12	12	11.84	10.99	10.23	9.56	8.98	8.45	7.99	7.57	6.68	5.97	5.38	4.9	
12 t	- 32.9 m	12	12	12	12	12	12	12	11.59*	10.9*	10.27*	9.71*	8.53*	7.6*			
18 t	- 23.1 m	18	18	17.26	15.89	14.72	13.7	12.81	12.02	11.33	10.7	10.14	8.95	8			
12 t	- 36.3 m	12	12	12	12	12	12	12	12	12	11.43*	10.85*					
18 t	- 25.3 m	18	18	18	17.53	16.24	15.12	14.14	13.28	12.51	11.82	11.24					
24 t	- 18.9 m	22.66	20.52	18.74	17.23	15.94	14.73	13.75	12.89	12.12	11.43	10.85					
12 t	- 30 m	12	12	12	12	12	12										
18 t	- 26.1 m	18	18	18	18	16.75	15.64										
24 t	- 19.4 m	23.29	21.09	19.25	17.7	16.36	15.25										

\* = + 400 kg [ - 30 m - 40 m - 50 m ] i

Altre installazioni  
Other configurations

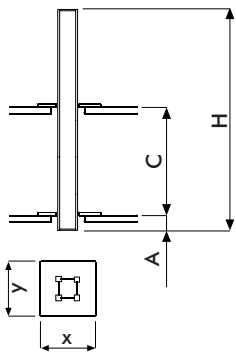
I  
GB

Autres implantations  
Aufstellmöglichkeiten

F  
D

Otras implantaciones

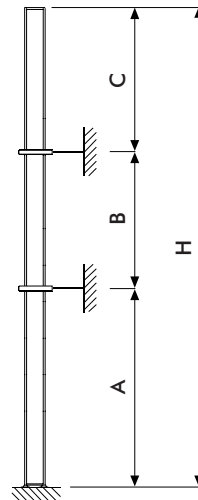
E



i

Gru climbing  
Bottom climbing crane  
Télescopage sur dalles  
Kletterkrane im Gebäude  
Telescopage grua trepadora

I  
GB  
F  
D  
E



i

Gru ancorata  
Crane tied to the structure  
Grue ancrée  
Geankerter Kran  
Grúa anclada

I  
GB  
F  
D  
E

		HD 23 22.6													
		[m]													
		L <sub>1</sub>	L <sub>1</sub>	L <sub>2,3</sub>	L <sub>4</sub>	L <sub>1</sub>	L <sub>2</sub>	L <sub>3</sub>	L <sub>4</sub>	L <sub>1,2</sub>	L <sub>3</sub>	L <sub>4</sub>	L <sub>1</sub>	L <sub>2,3</sub>	L <sub>4</sub>
C <sub>min</sub>		10	12			14				16			18		
H <sub>max</sub>		36	48	36	30	54	48	42	36	54	48	42	60	54	48
A <sub>min</sub>		2													
x		2.95													
y		2.42													

		HD 23 26.6																			
		[m]																			
		L <sub>1</sub>	L <sub>1</sub>	L <sub>2,3</sub>	L <sub>4</sub>	L <sub>1</sub>	L <sub>2</sub>	L <sub>3</sub>	L <sub>4</sub>	L <sub>1,2</sub>	L <sub>3</sub>	L <sub>4</sub>	L <sub>1</sub>	L <sub>2,3</sub>	L <sub>4</sub>	L <sub>1,2</sub>	L <sub>3</sub>	L <sub>4</sub>	L <sub>1,2,3,4</sub>		
C <sub>min</sub>		10	12			14				16			18			20			22	24	
H <sub>max</sub>		36	48	36	30	54	48	42	36	54	48	42	60	54	48	60	54	48	60	54	60
A <sub>min</sub>		2																			
x		3																			
y		2.47																			

		HD 23 R2				HD 23 R3			
		[m]							
		L <sub>1</sub>	L <sub>2,3</sub>	L <sub>4</sub>	L <sub>1</sub>	L <sub>2</sub>	L <sub>3</sub>	L <sub>4</sub>	
A <sub>min/max</sub>		30/54	30/48	30/42	30/66	30/66	30/60	30/54	
B <sub>min/max</sub>		24/36	24/36	24/30	24/36	24/36	24/36	24/30	
C <sub>max</sub>		34	30	26	34	30	30	26	
H <sub>max</sub>		i							



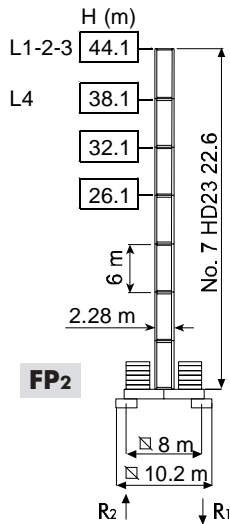
# CTL 400/A-24

Torre **I**  
Tower **GB**

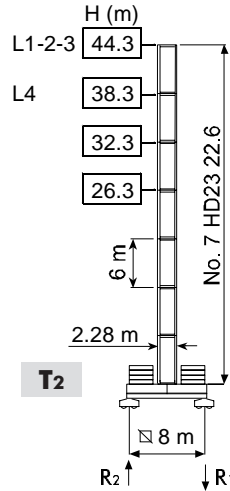
Tour **F**  
Turm **D**

Mástil **E**

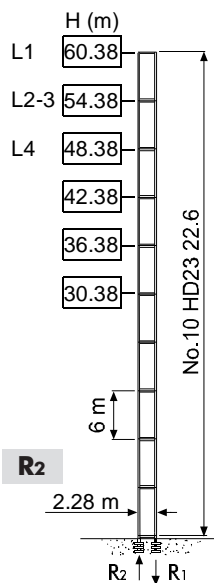
## HD23



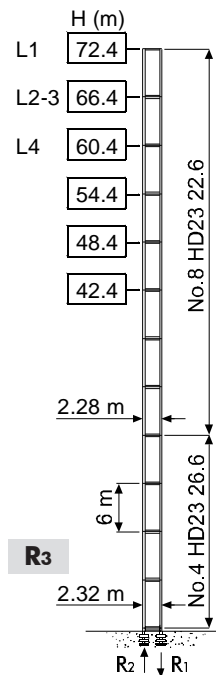
R1	1100 kN ●	1180 kN ◄
R2		
	94 t	



R1	1140 kN ●	1190 kN ◄
R2		
	108 t	



R1	2330 kN ●	3730 kN ◄
R2	1610 kN ●	3130 kN ◄
	88 t	



R1	2700 kN ●	5680 kN ◄
R2	1850 kN ●	4970 kN ◄
	112 t	

H	Altezza torre	<b>I</b>
●	In servizio	
◄	Fuori servizio	
	A vuoto, senza zavorra, braccio max., altezza max.	
H	Tower height	<b>GB</b>
●	In service	
◄	Out of service	
	Without load, without ballast, max. jib and max. height	
H	Hauteur mât	<b>F</b>
●	En service	
◄	Hors service	
	A vide, sans lest, avec flèche et hauteur maximum	
H	Turmhöhe	<b>D</b>
●	In Betrieb	
◄	Außer Betrieb	
	Ohne Last und Ballast, mit Maximalausleger und Maximalhöhe	
H	Altura torre	<b>E</b>
●	En servicio	
◄	Fuera de servicio	
	Sin carga, sin lastre, con pluma y altura máxima	



# CTL 400/A-24

Meccanismi  
Mechanisms



Mécanismes  
Antriebe



Mecanismos



258 * kVA	400 - 460 V / 50 - 60 Hz	2000/14/CE

\* Gru senza traslazione / Crane without travelling equipment / Grue sans translation / Krane ohne Schienenfahren / Grúa sin traslación

		m/min	t	kW	
		0 ⇒ 40	12	110	630 m (LLC D1) 1140 m (LLC D2)
		0 ⇒ 55	8.6		
		0 ⇒ 75	6		
		0 ⇒ 102	4.2		
		0 ⇒ 116	0.6		
		0 ⇒ 27	18		
		0 ⇒ 37	12.9		
		0 ⇒ 50	9		
		0 ⇒ 68	6.3		
		0 ⇒ 77	0.9		
		0 ⇒ 20	24		
		0 ⇒ 27.5	17.2		
		0 ⇒ 37.5	12		
		0 ⇒ 51	8.4		
		0 ⇒ 58	1.2		

	<b>LWL 9000/D2</b>	2.1 min	90 kW
	<b>SCC 2 2 132</b>	0 ⇒ 0.65 r.p.m.	2 × 14 kW
	<b>TSR 2 RG 4 M 8</b>	12 ⇒ 24 m/min	4 × 80 Nm

	Sollevamento	<b>I</b>	Hoisting	<b>GB</b>	Levage	<b>F</b>	Heben	<b>D</b>	Elevación	<b>E</b>
	Brandeggio		Luffing		Relevage		Ausleger-Einziehen		Elevación de pluma	
	Rotazione		Slewing		Orientation		Schwenken		Orientación	
	Traslazione		Travelling		Translation		Schienenfahren		Traslación	
	Direttiva sul livello acustico		Directive on noise level		Directive sur le niveau acoustique		Richtlinie für den Schall-Leistungspegel		Directiva sobre el nivel acustico	
	Consultateci		Consult us		Nous consulter		Auf Anfrage		Consultarnos	
	Potenza totale richiesta		Power requirements		Puissance totale nécessaire		Geforderte Stromstärke		Potencia necesaria	
	Alimentazione		Power supply		Alimentation		Stromversorgung		Alimentación	

## Gru Comedil s.r.l.

A Terex Company



Via S. Egidio 42/A, 33074 Fontanafredda (PN) - Italy  
Tel. (+39) 0434 567 311 - Telefax (+39) 0434 998631

Internet e-mail: info@comedil.com  
Internet home page: www.comedil.com

## Divisione Automontanti

Via Alessandrina, 25 - 20095 Cusano Milanino (MI) - Italy  
Tel. (+39) 02 613 16011 - Telefax (+39) 02 613 16034

Internet e-mail: info.CBR@comedil.com