

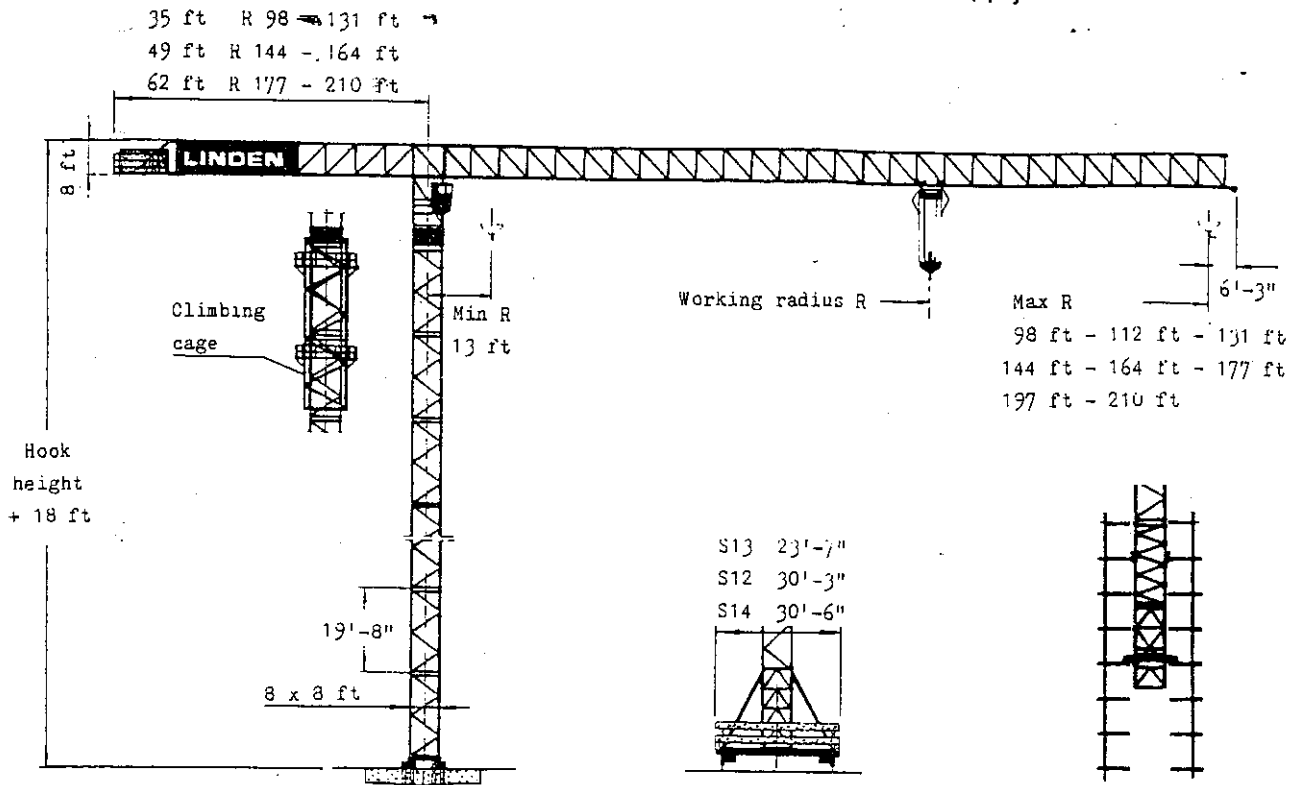
LINDEN Tower Crane

Quick-data

8452

Design Code DIN 15018 H1 B3

Power Supply 440 V 60 Hz



Stationary crane

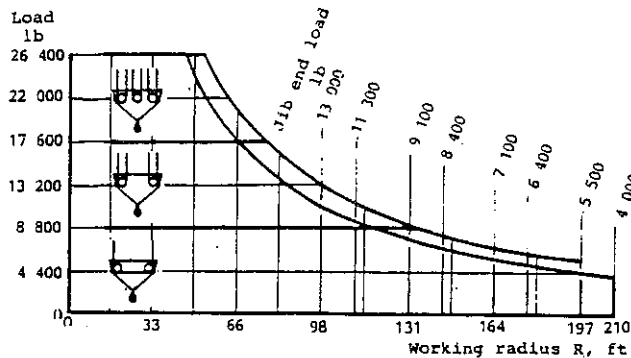
Rail mounted crane

Floor climbing crane

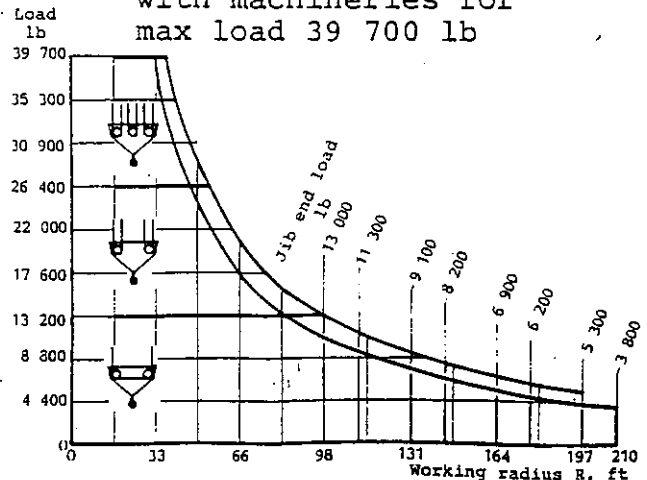
Max free-standing hook height
303 ft

Travelling carriage type	Max free-standing hook height	Rail centre gauge	Min. curve radius	Max hook height above top floor
S13	148 ft	19'-8.2"	26 ft	166 ft
S12	207 ft	26'-3.0"	40 ft	
S14	287 ft	26'-3.0"	130 ft	

Hoisting capacity with machineries for max load 26 400 lb



Hoisting capacity with machineries for max load 39 700 lb



Tower cranes according to this specification are included in LINDEN MODULAR SYSTEM 8000. On request LINDEN-ALIMAK AB will be pleased to offer other crane compositions which are either within or outside this modular system.