

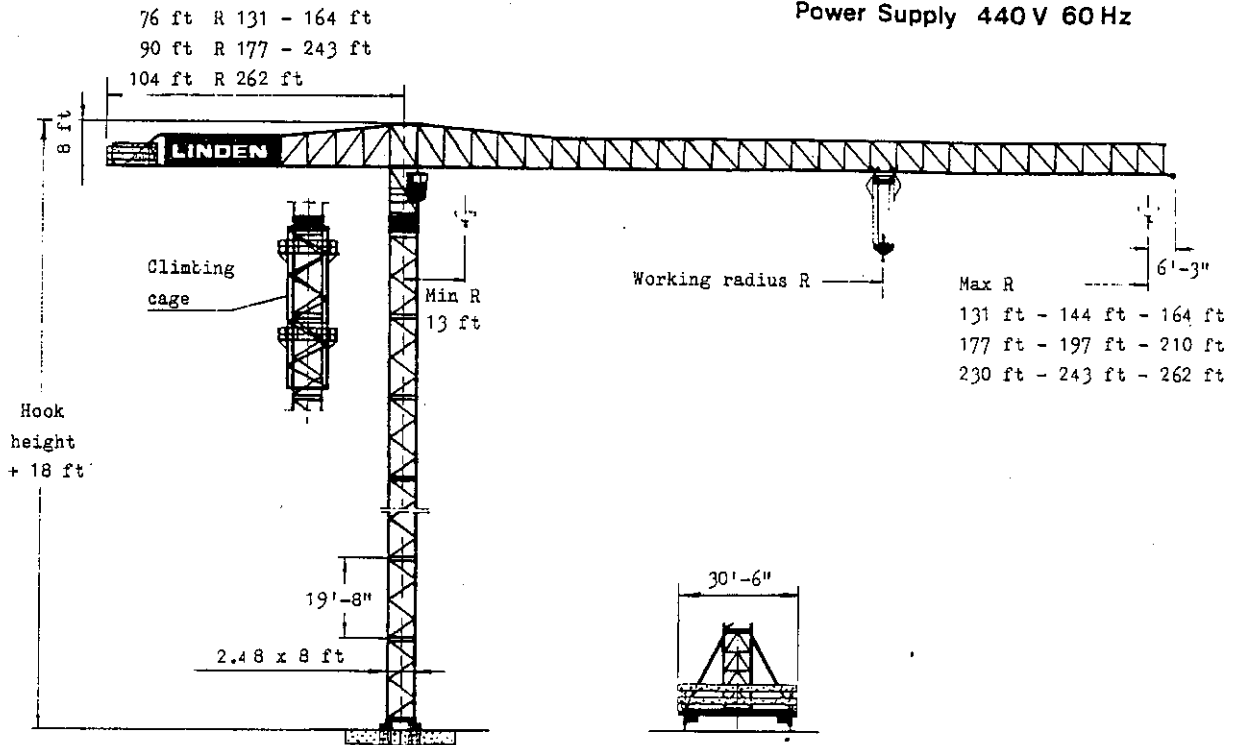
LINDEN Tower Crane

Quick-data

8752

Design Code DIN 15018 H1 B3

Power Supply 440 V 60 Hz



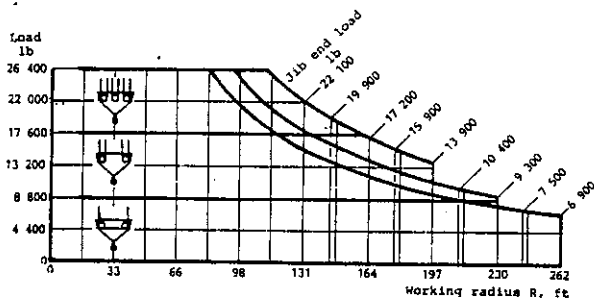
Stationary crane

Max free-standing hook height
264 ft

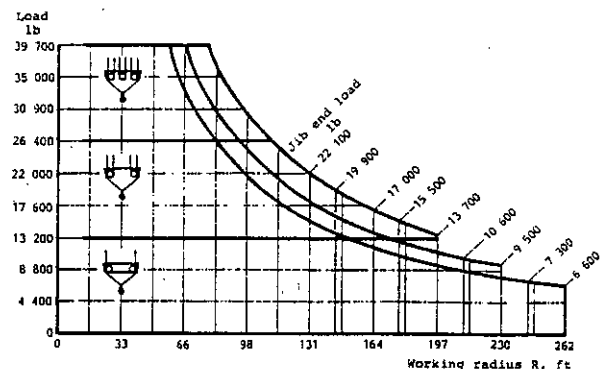
Rail mounted crane

Travelling carriage type	Max free-standing hook height	Rail centre gauge	Min. curve radius
S14	228 ft	26'-3.0"	130 ft

Hoisting capacity with machineries for max. load 26 400 lb



Hoisting capacity with machineries for max load 39 700 lb



Tower cranes according to this specification are included in LINDEN MODULAR SYSTEM 8000. On request LINDEN-ALIMAK AB will be pleased to offer other crane compositions which are either within or outside this modular system.